


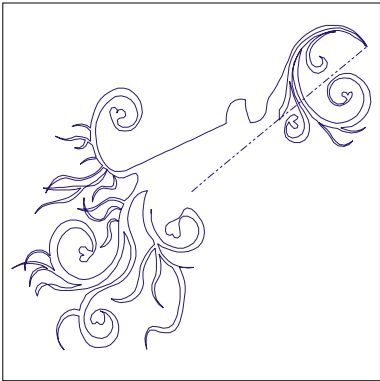


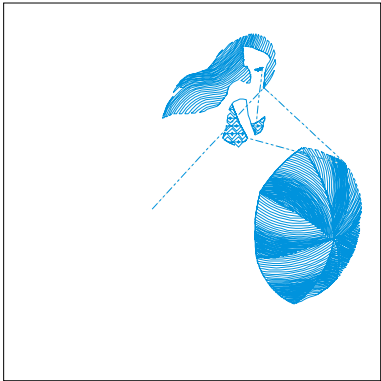
Machine format:	Tajima
Color changes:	2
Stops:	3
Trims:	7
Auto fabric:	Fabric Name
Required stabilizer:	Stabilizer
Left:	80.3 mm
Right:	80.1 mm
Up:	74.5 mm
Down:	74.3 mm
EndX:	-0.00 in
EndY:	0.00 in
Area	37.01 inl
Max Stitch:	6.8 mm
Min Stitch:	0.3 mm
Max jump:	6.8 mm
Total Thread:	142.89ft
Total bobbin:	49.75ft

Stop Sequence:

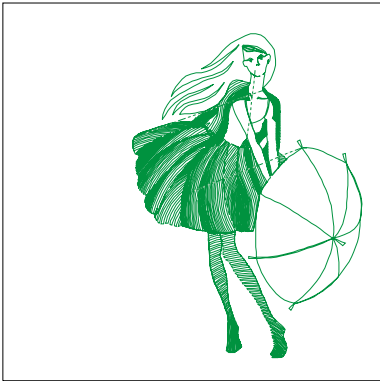
#	N#	St.	Code	Description	Brand
1.	1		1077	1 Blue	Wilcom
2.	2		3085	2 Cyan	Wilcom
3.	3		4619	3 Green	Wilcom



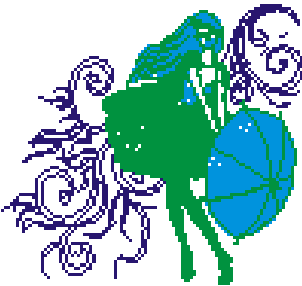
#: 1  
Color: Blue  
Code: 1  
Brand: Wilcom  
Stitches: 1077  
Thread used: 17.90ft



#: 2  
Color: Cyan  
Code: 2  
Brand: Wilcom  
Stitches: 3085  
Thread used: 50.37ft



#: 3  
Color: Green  
Code: 3  
Brand: Wilcom  
Stitches: 4619  
Thread used: 73.29ft

	Machine format:	Tajima	Left:	80.3 mm
	Color changes:	2	Right:	80.1 mm
	Stops:	3	Up:	74.5 mm
	Trims:	7	Down:	74.3 mm
	Max Stitch:	6.8 mm	EndX:	-0.00 in
	Min Stitch:	0.3 mm	EndY:	0.00 in
	Max jump:	6.8 mm	Area	37.01 inl
	Auto fabric:	Fabric Name	Total Thread:	142.89ft
	Required stabilizer:	Stabilizer	Total bobbin:	49.75ft

Colorway			Colorway 1
Background			
Stop	Color	Stitches	
1	1	1077	1 Blue Wilcom
2	2	3085	2 Cyan Wilcom
3	3	4619	3 Green Wilcom